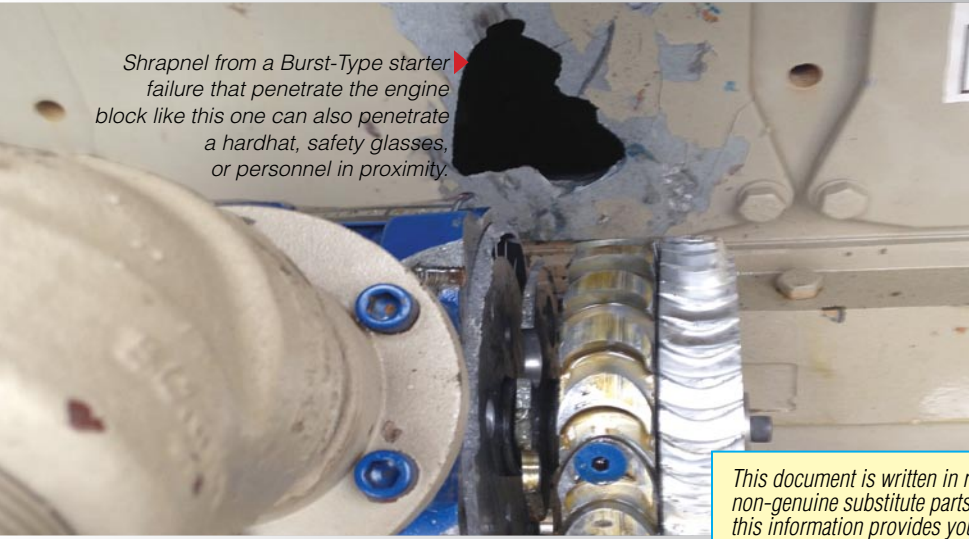


Non-Genuine, Substitute Turbine Parts Are Posing Safety Risk

WARNING!

Shrapnel from a Burst-Type starter failure that penetrate the engine block like this one can also penetrate a hardhat, safety glasses, or personnel in proximity.



This document is written in response to serious safety issues that have risen due to the use of certain non-genuine substitute parts and uncertified repair practices to TDI TurboTwin Air Starters. We hope this information provides your safety team with the insight and background necessary to keep your engine operation free of turbine-related safety incidents.

Using **Non-Genuine TDI Starter Substitutes** or Parts of Unknown Origin for TDI “Remans” & Repairs May Result In Accidents, Injuries and Equipment Damage

Knowledge is Value and Safety -

Understanding and managing risk requires knowledge. While “turbine-type” air starters are common these days, many remain unaware that these are very powerful, high-speed rotating devices. TDI never forgets this. As vastly superior starter replacements, or as OEM supplied engine starters, Genuine TDI TurboTwin Air Starters and parts are engineered, designed and rigorously tested for safety. Because we know turbine air starters, running at very high speeds of +50,000 RPM, absolutely demand due diligence to insure not only reliability, but also failsafe operation. The same may not be the case with providers of “substitute” “similar” or “look alike” starters and parts... or “off-brands” offered as “TDI

replacements.” If a turbine starter has not been demonstrated by its maker to fail safely, is it really safe? We think not, and nor should you.

Safety is Part of Our Design & Test

Verification - TDI works every day to earn and keep your trust. Over fifty years of designing and building high speed air turbines, taught us even small design or material “compromises” create much greater potential for “burst” type starter failures. Dangerous, because resulting shrapnel can cause injury or worse, to personnel in proximity. The real question is; who at your company would knowingly risk operational or personnel safety, by making such uninformed choices? We think no one.

Why Choosing Genuine TDI is a Choice

For Safety - TDI believes costs, benefits and most importantly, managing risks are essential to making responsible procurement choices. TDI supplies many aerospace customers. As a result, aircraft-quality processes are used for all TDI products. These are an integral part of the value we bring to your organization. As an AS9100 certified manufacturer, things like a “layers of safety” design approach are built into every TDI product. So that even in an abusive condition or when improperly controlled, TDI starters remain the safest choice. In the event of an incident, things like verifiable parts traceability (required by AS9100); means TDI has your back. In today’s high stakes, litigious business environment, process verification and knowing who to trust are your best protection.

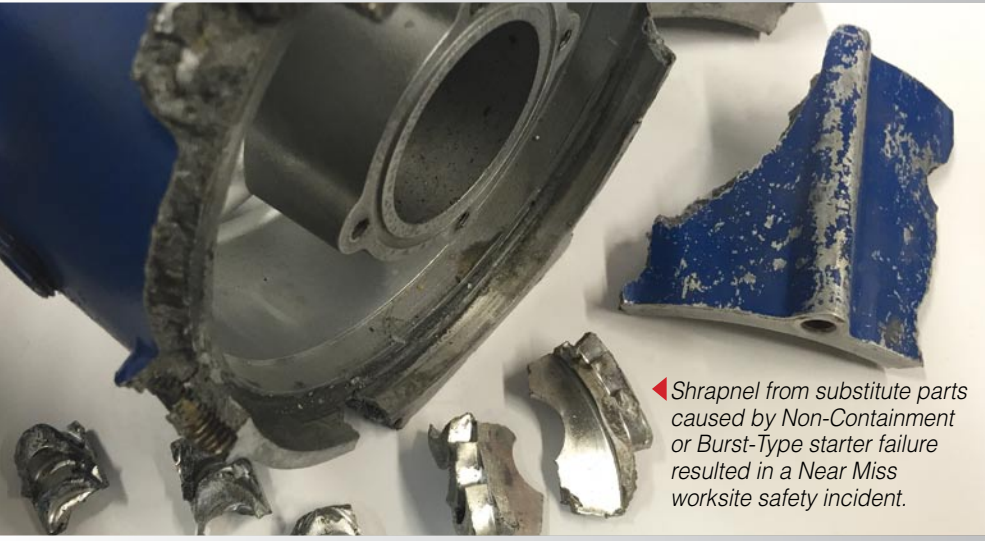
Genuine TDI Turbine Wheels (Rotors) Have etched TDI numbers, address & Genuine Parts logo



Anything Less Than a **TURBOTWIN** Air Starter is a Compromise

6800 Poe Ave. • Dayton, OH 45414
Tel: 937-898-9600 • Fax: 937-898-8431
www.tdi-turbotwin.com

SAFETY ALERT!



◀ Shrapnel from substitute parts caused by Non-Containment or Burst-Type starter failure resulted in a Near Miss worksite safety incident.

Don't Be Misled By Non-Genuine Substitute Parts - To mislead you, some starter repair shops and parts suppliers even reference TDI part numbers (p/ns), colors and product labeling visually or nearly identical to TDI's. Yet, TDI remains confident knowledge is the best loss prevention tool we can impart to our customers. It starts with asking more questions. If your supplier answers using words like "it's similar to" or "it's the same as TDI" or "it's our direct replacement for TDI model X"... STOP! As for turbine type starter reman services, service parts or repairs, beware of parts or processes described as "re-qualified" or "re-commissioned" or "bench tested." Without verification, who really knows what those things mean?


Substitute or Inferior Parts at Very High Speeds Create Unnecessary Risk



If It Doesn't Fail Safely, Is It Really Safe?

So How Do You Know Your Air Starters Are Safe? - Using ONLY Genuine TDI/Tech Development starters, parts and service, sourced ONLY from TDI Certified/Authorized suppliers or our OEM partner brands, is the safest way to go. To help you get there, TDI is implementing new and stronger branding measures, as well as enforcement of print and logo copyrights on things we make. Authorized TDI Distributors can help your safety team clearly identify what hardware you have, and if need be, to replace risky "substitute" starters or parts unknowingly sourced. For service, you can depend on TDI Factory Certified TurboTech facilities, which receive proper factory training, the latest service bulletins, and use only TDI factory approved parts and repair procedures. They in fact can earn a signed, written certificate that is available on request. Just ask.

For simplicity, your procurement and vendor approval specifications, should accept no substitutes. Why would anybody knowingly take that risk?

		Authorized & Certified SERVICE CENTER	
Service Performed By:	ABC Distributor 555 Main Street Anywhere, USA Tel - 555-555-5555		
	Date:		

Look for the Certified TDI Service Center Label or Factory Remanufactured Label on your TDI Remans to assure it's a real TurboTwin™. Contact TDI to find the closest authorized and certified distributor in your area.



◀ This one part, a copy of a TDI nozzle block can compromise both starter performance and safety. Why risk it?



◀ Genuine TurboTwin™ Parts feature the etched TDI and TurboTwin™ logos. If there's no etching, it's not a TurboTwin™ part.


TECH DEVELOPMENT



Anything Less Than a TurboTwin Air Starter is a Compromise

6800 Poe Ave. • Dayton, OH 45414
Tel: 937-898-9600 • Fax: 937-898-8431
www.tdi-turbotwin.com